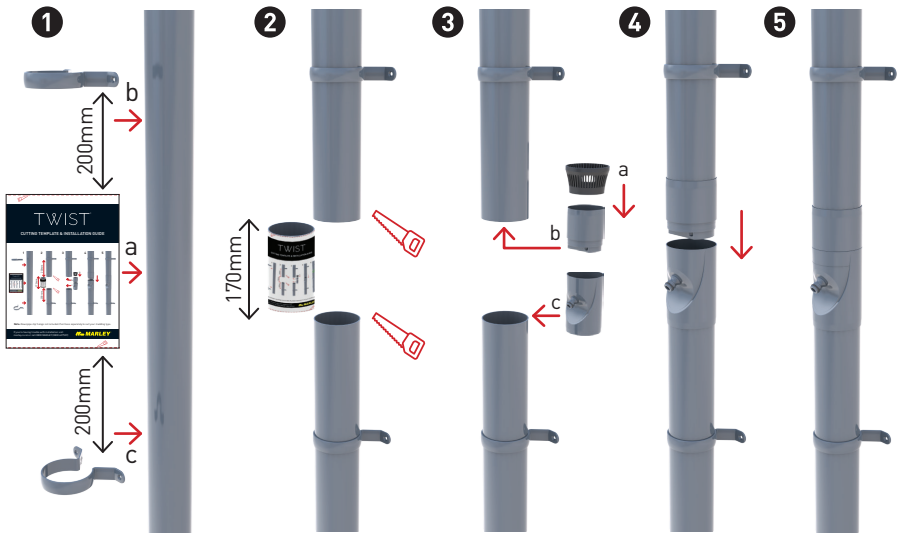




Apply this template to your downpipe as a cutting guide.

# TWIST<sup>®</sup>

## CUTTING TEMPLATE & INSTALLATION GUIDE



**Note:** Downpipe clip fixings not included. Purchase separately to suit your cladding type.

If you're having trouble with installation visit [marley.co.nz](http://marley.co.nz) or call 0800 MARLEY (0800 627539)

**MARLEY**  
by aliaxis

INSTR TWIST

