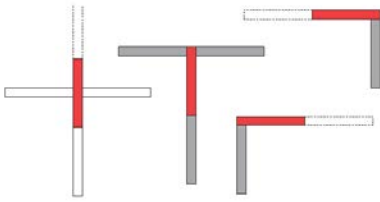
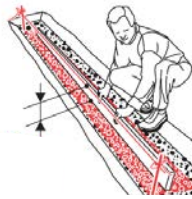


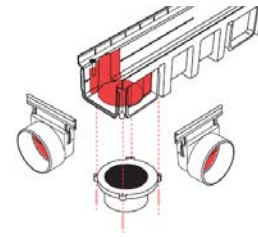
Connecto™ Installation



Various possibilities of connections with angles at 90° can easily be made (the red part has to be fitted last)



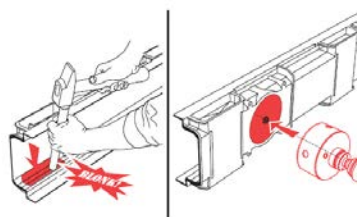
Dig a trench with adapted measures (10cm around the channels). Realise the concrete bedding according to the required depth.



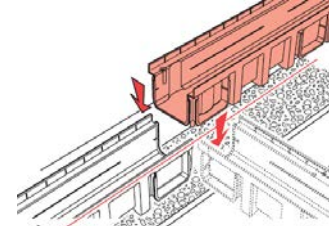
Determine the outlet unit to be used and its position in order to ensure the connection to the rainwater pipe works.



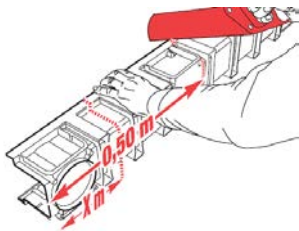
Hammer the desired outlet in and put into position the required outlet/stop end fitting.



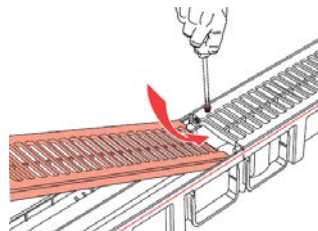
For the channel, hammer the lateral outlet by the internal side and drill the vertical outlet.



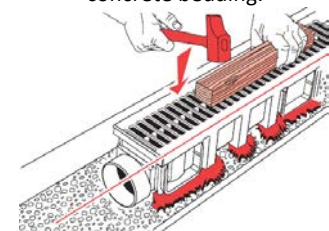
The sections of the channels which fit to each other thanks to a male/ female interlocking system have to be laid on the concrete bedding.



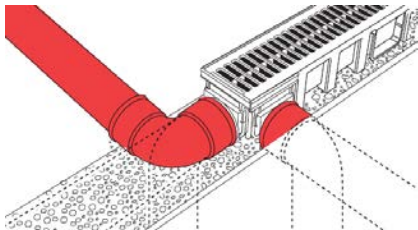
If needed, cut the last element of the channel to adapt to the required length.



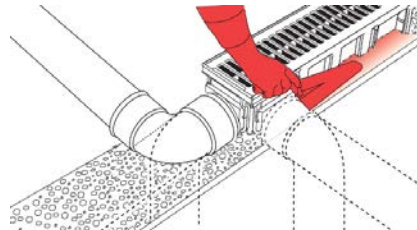
Install U-PVC gratings. *To attach your grate to your channel please see instructions below.



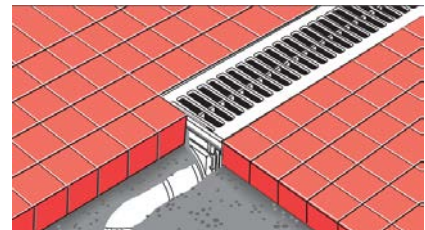
Push the channel in a few mm to get a good support with the concrete foundation.



Connect the channel to the stormwater pipe. Diameter 100mm stormwater pipe



Release concrete haunchings to prevent lateral forces acting on sidewalls.

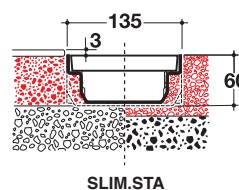
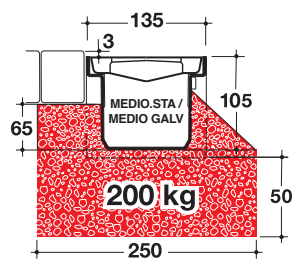
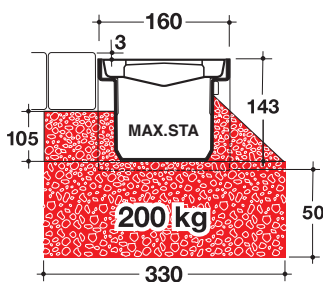


Fill in and make the finishing with paving for instance. The ground level should be 3mm above the grating one.

***Note:**

1. Channel - Place 4 inserts per metre channel using a hex head Allen key.
2. Grates - Using a drill clear the 2 pre drilled holes on the grate, then fix the grate to the channel with the screws supplied.

Installation instructions for a load of 1.5 tonnes per wheel



To ensure a weight loading of 1.5 tonne per wheel, the concrete bed should be completed according to the sketches shown to the left.

Concrete to the top of the channel where there is a sloped area and for additional stability.