

MARLEY QUANTUM[®]

INTEGRATED RING JOINTING SYSTEM

About Quantum[®]

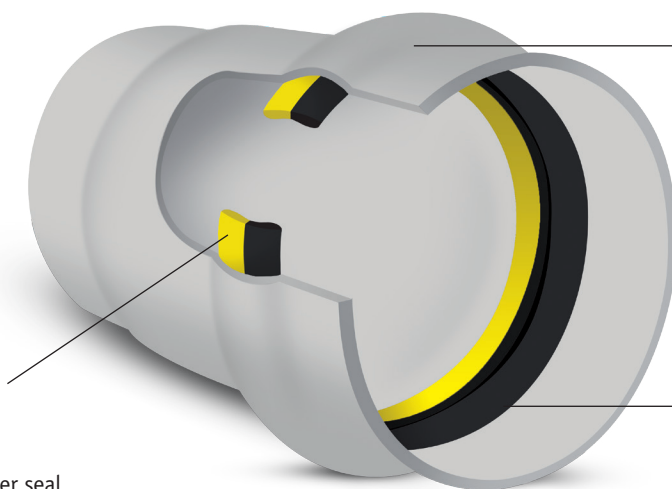
Marley Quantum[®] is the new integrated ring jointing system to be used in several of Marley's uPVC pipe systems.

Marley Quantum can be used in a wide variety of applications, including pressurised civil and irrigation systems and non-pressure stormwater and sewer systems.

The system utilises advanced manufacturing technology to form the pipe socket and integrate the ring during the manufacturing process. This creates a secure and reliable seal with no further ring assembly required onsite.



Features and benefits



REINFORCED POLYPROPYLENE

- Bonded to rubber seal
- Holds seal firmly in place.

INTEGRATED SOCKET

- Fast Installation
- Seal locked into the socket at time of manufacture.

FLEXIBLE RUBBER SEAL

- Seals tightly against spigot and socket
- Ring Seal tested to AS/NZS 1462.

Available in the following Marley pipe systems

- OPTIM[®] DWV Sanitary / Sewer Non Pressure 100mm DN-375mm DN
- STORMLINE[®] Stormwater non pressure 150mm DN – 375mm DN
- 800 Series 1 Pressure Pipe uPVC 100mm DN-375mm DN
- GENEX Series 1 Pressure Pipe mPVC 100mm DN –375mm DN

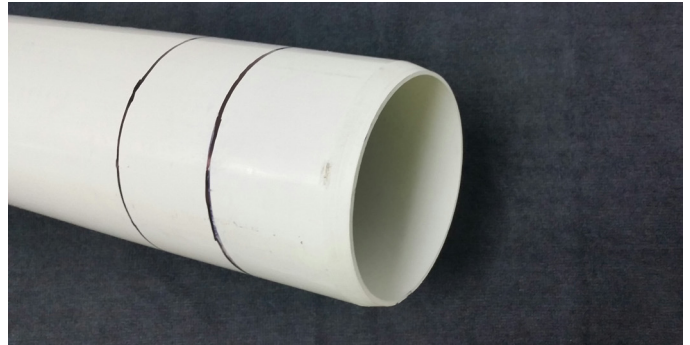
MARLEY QUANTUM[®] IS ONLY AVAILABLE IN THE SOUTH ISLAND

INSTALLATION GUIDELINES

The installation of pipes featuring the Marley Quantum® system closely follows the existing Code of Practice for rubber ring jointing.

1. Check Spigot

Ensure the pipe spigot has a full 15° Chamfer. If cutting the pipe, make sure you remove any burrs. Check that there is a witness mark present, then remove any dirt and dust as far back as the witness mark.



2. Clean Ring in the Socket

Clean the socket and Quantum ring with a clean rag to remove any dirt and grit.

NB: Do not attempt to remove the ring from the socket.



3. Align and Lubricate Pipes

Align pipes horizontally and vertically. Do not try to insert pipe at an angle to the socket. Lubricate spigot evenly with Marley jointing lubricant.



4. Insert Pipe

Insert spigot into socket to the marked distance, compressing the seal until the joint is fully made. Check the witness mark to make sure over insertion has not occurred. The pipe should not bottom out in the socket to allow for expansion. If a reference mark is present then the distance between it and the witness mark should be 50mm.



For more information: **FREEPHONE 0800 627 539**

www.marley.co.nz

Plumbing Solutions

 **MARLEY®**