



CABLE MANAGEMENT PRICE CATALOGUE

OCTOBER 2015

ABOUT US

Marley New Zealand

Marley New Zealand manufactures extruded and injection moulded uPVC and Polyethylene products for the New Zealand building, civil infrastructure and rural markets. Marley also export products to the Pacific Islands, South East Asia, Australia and the UK.

Today there are over 200 people in the Marley NZ team with manufacturing taking place on two sites – Auckland in the North Island, which also houses the Head Office, and Christchurch in the South Island.

Aliaxis Group

Marley New Zealand is part of the Aliaxis group, a privately owned business based in Belgium which employs 15,700 people across forty countries and is made up of 100 companies worldwide. Each of these companies manufactures and/or markets plastic products for construction, industrial and public uses. Marley NZ is the largest division of Aliaxis in New Zealand and the largest manufacturer of uPVC pipes and fittings in New Zealand

Keep New Zealand Green

Marley is committed to conducting its business in a manner that is compatible with the environment with regards to where our products are sourced, manufactured, used and disposed. Marley operates a uPVC recycling program as part of our ISO 14001 environmental management system and is Best Environmental Practice certified for its entire manufactured range of uPVC systems. This allows designers and installers to achieve GreenStar credits when using Marley uPVC systems in commercial buildings.

Make it Marley

- Reliable local manufacturer for over 50 years
- Commitment to a sustainable future
- Experienced technical and production teams to ensure quality and rigorous testing
- ISO 9001 and 14001 accreditation
- Complete range of products and systems
- Nationwide distribution network
- 100% Recyclable products
- Best Environmental Practice (BEP) accreditation of uPVC systems.
- Access to international resources through parent company

Marley Means Quality

Marley NZ Ltd is ISO 9001 accredited and holds a Bureau Veritas License for the manufacture of uPVC Conduit and Fittings S/NZS 2053 Lic No 2297.

Aliaxis



CONTENTS

PAGE

02 CONDUIT SYSTEMS

03 RIGID CONDUIT

03 Rigid Conduit Fittings

10 FLEXIBLE CONDUIT

10 Flexible Conduit Fittings

11 TRUNKING SYSTEMS

12 MINI TRUNKING

12 Mini Trunking Fittings

14 MAXI TRUNKING

14 Maxi Trunking Fittings

15 AIR-CON DUCT SYSTEMS

16 AIR CONDITIONING DUCT AND FITTINGS

18 ACCESS PITS

18 ELECTRICAL ACCESS PITS

19 DUCT SYSTEMS

20 RIGID DUCT

20 Power Duct

22 Communication Duct

24 uPVC Jointing Solvent

25 CONTINUOUS DUCT

25 Power Duct

25 Communication Duct

27 Marley Electrofusion Fittings



INSIST ON BEP CERTIFIED PRODUCTS

Commercial 'Green Star' building customers demand products that meet the Green Building Council's Best Environmental Practice guidelines.

Marley uPVC conduit pipe and fittings are BEP certified.

Marley is New Zealand's only manufacturer that offers a complete uPVC electrical pipe and fittings system that has been independently certified to meet the Green Building Council's Best Practice Guidelines for PVC in the built environment.

BEP criteria:

- ✓ Audited supply chain
- ✓ Manufacture of PVC Resin
- ✓ Manufacture of PVC Product
- ✓ PVC Product end of life management
- ✓ Use of PVC recycle in PVC products

Insist on genuine Marley BEP products, proud New Zealand manufacturer.



CONDUIT SYSTEMS

PAGE

02 CONDUIT SYSTEMS

03 RIGID CONDUIT

03 Rigid Conduit Fittings

10 FLEXIBLE CONDUIT

10 Flexible Conduit Fittings

RIGID CONDUIT SYSTEMS

-  NZ MANUFACTURED
-  MEETS AS/NZS 2053
-  100% RECYCLABLE
-  FIT FOR PURPOSE
-  IMPACT RESISTANT



MEDIUM DUTY

Economical & versatile



SOLAR

Solar panel & outdoor applications
As per AS/NZS 5033:2014



HEAVY DUTY

Bury underground with no extra protection. As per AS/NZS 3000



RIGID CONDUIT

RIGID CONDUIT

MEDIUM DUTY CODE	PACK*	COLOUR	REC. TRADE PRICE PER LENGTH
01.20	80m (20 x 4m)	G & O	22.69
01.25	40m (10 x 4m)	G & O	28.65
01.32	40m (10 x 4m)	G & O	37.71
01.40	24m (6 x 4m)	G & O	51.57
01.50	24m (6 x 4m)	G & O	78.98



SOLAR CODE	PACK*	COLOUR	REC. TRADE PRICE PER LENGTH
01.20G.HDSOLAR	40m (10 x 4m)	G	28.36
01.25G.HDSOLAR	40m (10 x 4m)	G	35.80
01.32G.HDSOLAR	20m (5 x 4m)	G	47.14
01.50G.HDSOLAR	16m (4 x 4m)	G	98.73



HEAVY DUTY CODE	PACK*	COLOUR	REC. TRADE PRICE PER LENGTH
01.200.HD	80m (20 x 4m)	O	28.06
01.250.HD	40m (10 x 4m)	O	35.58
01.320.HD	40m (10 x 4m)	O	46.38
01.400.HD	24m (6 x 4m)	O	64.45
01.500.HD	24m (6 x 4m)	O	98.73



*Lengths indicated above include socket length

RIGID CONDUIT FITTINGS

PLAIN COUPLINGS CODE	PACK	COLOUR	REC. TRADE PRICE PER UNIT
02.20	50	G & O	1.49
02.25	20	G & O	1.64
02.32	20	G & O	2.26
02.40	20	G & O	3.73
02.50	20	G & O	6.35



FLEXIBLE EXPANSION COUPLINGS CODE	PACK	COLOUR	REC. TRADE PRICE PER UNIT
03.20	50	G	3.62
03.25	20	G	4.35



PLAIN TO SCREW COUPLINGS

CODE	PACK	COLOUR	REC. TRADE PRICE PER UNIT
04.20	50	G & O	2.31
04.25	20	G & O	3.08
04.32	10	G & O	5.11
04.40	10	G & O	7.91
04.50	10	G & O	13.78

**PLAIN TO SCREW ADAPTORS**

CODE	PACK	COLOUR	REC. TRADE PRICE PER UNIT
05.20	50	G & O	2.50
05.25	20	G & O	3.08
05.32	20	G & O	4.02
05.40	10	G & O	6.48
05.50	10	G & O	8.62

**SCREWED NIPPLES**

CODE	PACK	COLOUR	REC. TRADE PRICE PER UNIT
06.20	50	G	1.75
06.25	20	G	2.18
06.32	20	G	3.86
06.40	20	G	5.57
06.50	10	G	6.46

**PLAIN REDUCERS**

CODE	PACK	COLOUR	REC. TRADE PRICE PER UNIT
07.20	50	G	1.61
07.25	50	G & O	1.61
07.32	20	G & O	3.96
07.40	20	G & O	5.48
07.50	10	G & O	12.86

Note: Fittings reduce to next lower size

**SCREWED REDUCERS**

CODE	PACK	COLOUR	REC. TRADE PRICE PER UNIT
08.20	50	G & O	3.30
08.25	50	G & O	9.83
08.32	50	G & O	10.34

Note: Fittings reduce to next lower size



LOCKNUTS			
LOCKNUTS CODE	PACK	COLOUR	REC. TRADE PRICE PER UNIT
09.20	100	G & O	1.30
09.25	50	G & O	1.37
09.32	50	G & O	1.58
09.40	20	G & O	5.67
09.50	20	G & O	6.88



LOCKRINGS			
LOCKRINGS CODE	PACK	COLOUR	REC. TRADE PRICE PER UNIT
29.20	100	G	0.66
29.25	50	G	1.04



SADDLES			
SADDLES CODE	PACK	COLOUR	REC. TRADE PRICE PER UNIT
10.20	100	G & O	0.66
10.25	100	G & O	0.95
10.32	50	G & O	1.31
10.40	50	G & O	1.44
10.50	20	G & O	1.61



SADDLE SPACER			
SADDLE SPACER CODE	PACK	COLOUR	REC. TRADE PRICE PER UNIT
SS.20G	50	G	3.76
SS.25G	20	G	4.26



CONDUIT CLIPS			
CONDUIT CLIPS CODE	PACK	COLOUR	REC. TRADE PRICE PER UNIT
19.20	50	G & O	2.82
19.25	50	G & O	3.26
19.32	20	G & O	3.73
19.40	20	G	6.70
19.50	10	G	7.61



SOLID ELBOWS			
SOLID ELBOWS CODE	PACK	COLOUR	REC. TRADE PRICE PER UNIT
11.20	20	G & O	5.11
11.25	20	G & O	5.64



PLAIN BENDS			
PLAIN BENDS CODE	PACK	COLOUR	REC. TRADE PRICE PER UNIT
12.20	20	G & O	4.98
12.25	20	G & O	5.52
12.32	10	G & O	6.53
12.40	5	G & O	7.22
12.50	5	G & O	9.31



SWEEP BENDS 45°

CODE	PACK	COLOUR	REC. TRADE PRICE PER UNIT
12A.20.45	1	G & O	9.89
12A.25.45	1	G & O	13.36
12A.32.45	1	G & O	19.21
12A.40.45	1	G & O	13.40
12A.50.45	1	G & O	14.95

**SWEEP BENDS 90°**

CODE	PACK	COLOUR	REC. TRADE PRICE PER UNIT
12A.20.90	1	G & O	9.31
12A.25.90	1	G & O	13.34
12A.32.90	1	G & O	14.18
12A.40.90	1	G & O	14.55
12A.50.90	1	G & O	19.63

**INSPECTION ELBOW**

CODE	PACK	COLOUR	REC. TRADE PRICE PER UNIT
13.20	20	G & O	5.22
13.25	20	G & O	5.60
13.32	10	G & O	7.93
13.40	10	G & O	16.81
13.50	5	G & O	23.95

**INSPECTION TEES**

CODE	PACK	COLOUR	REC. TRADE PRICE PER UNIT
14.20	20	G & O	6.53
14.25	10	G & O	7.22
14.32	10	G & O	8.76
14.40	5	G & O	17.31
14.50	2	G & O	30.56

**INSPECTION BENDS**

CODE	PACK	COLOUR	REC. TRADE PRICE PER UNIT
15.20	20	G & O	6.53
15.25	20	G & O	6.87
15.32	10	G & O	7.82

**MALE BUSH**

CODE	PACK	COLOUR	REC. TRADE PRICE PER UNIT
17.20	50	G	0.77
17.25	20	G	1.39
17.32	20	G	1.68
17.40	20	G	3.11
17.50	10	G	3.76



FEMALE BUSH			
CODE	PACK	COLOUR	REC. TRADE PRICE PER UNIT
18.20	50	G	0.77
18.25	20	G	1.39
18.32	20	G	1.68
18.40	20	G	3.11
18.50	10	G	3.76



CIRCULAR JUNCTION BOXES				
CODE	SIZE D x H (mm)	PACK	COLOUR	REC. TRADE PRICE PER UNIT
21.20 (1W)	75 x 35	10	G & O	7.79
21.25 (1W)	75 x 35	10	G & O	8.23
22.20 (2W)	75 x 35	10	G & O	7.79
22.25 (2W)	75 x 35	10	G & O	8.23
23.20 (3W)	75 x 35	10	G & O	7.79
23.25 (3W)	75 x 35	10	G & O	8.23
24.20 (4W)	75 x 35	10	G & O	7.79
24.25 (4W)	75 x 35	10	G & O	8.23
25.20 (A)	75 x 35	10	G & O	7.79
25.25 (A)	75 x 35	10	G & O	8.23



Note: Removable lid.

JUNCTION BOX LID			
CODE	PACK	COLOUR	REC. TRADE PRICE PER UNIT
17	1	G & O	1.83

Note: 75mm diameter. Will not fit the AE range.



CIRCULAR JUNCTION BOXES				
CODE	SIZE D x H (mm)	PACK	COLOUR	REC. TRADE PRICE PER UNIT
21.20.AE (1W)	67 x 38	10	G & O	7.79
21.25.AE (1W)	67 x 38	10	G & O	8.23
22.20.AE (2W)	67 x 38	10	G & O	7.79
22.25.AE (2W)	67 x 38	10	G & O	8.23
23.20.AE (3W)	67 x 38	10	G & O	7.79
23.25.AE (3W)	67 x 38	10	G & O	8.23
24.20.AE (4W)	67 x 38	10	G & O	7.79
24.25.AE (4W)	67 x 38	10	G & O	8.23

Note: Designed to fit most batten holders and ceiling roses.



DEEP CIRCULAR JUNCTION BOXES

CODE	SIZE D x H (mm)	PACK	COLOUR	REC. TRADE PRICE PER UNIT
21.20.AED.G (1W)	67 x 73	5	G	10.70
21.25.AED.G (1W)	67 x 73	5	G	12.45
22.20.AED.G (2W)	67 x 73	5	G	10.70
22.25.AED.G (2W)	67 x 73	5	G	12.45
23.20.AED.G (3W)	67 x 73	5	G	10.70
23.25.AED.G (3W)	67 x 73	5	G	12.45
24.20.AED.G (4W)	67 x 73	5	G	10.70
24.25.AED.G (4W)	67 x 73	5	G	12.45

Note: Designed to fit most batten holders and ceiling roses.

**ELECTRICAL ENCLOSURE BOXES**

CODE	DESC.	SIZE L x W x H (mm)	PACK	REC. TRADE PRICE PER UNIT
EE256	Plain Sides	100 x 100 x 54	1	35.63
EE356	Plain Sides	164 x 129 x 68	1	50.45
EE362	Plain Sides	214 x 162 x 92	1	66.96
EE362H	High-lid, Plain Sides	214 x 162 x 128	1	85.47

Note: Comes with rubber gasket for IP55 protection against dust and water

**ADAPTABLE BOXES**

CODE	SIZE W x D x H (mm)	PACK	COLOUR	REC. TRADE PRICE PER UNIT
16.01	76 x 76 x 51	1	G	25.48

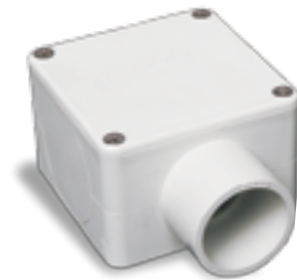
**BENDING SPRINGS (for medium duty conduit)**

CODE	PACK	REC. TRADE PRICE PER UNIT
20.20	1	46.75
20.25	1	60.92
20.32	1	64.81



SQUARE JUNCTION BOXES

CODE	PACK	COLOUR	REC. TRADE PRICE PER UNIT
51.32 (1W)	5	G & O	16.18
51.40 (1W)	1	G & O	38.03
51.50 (1W)	1	G & O	34.41
52.32 (2W)	5	G & O	16.18
52.40 (2W)	1	G	41.88
52.50 (2W)	1	G & O	50.13
53.32 (3W)	5	G & O	16.18
53.40 (3W)	1	G	55.09
53.50 (3W)	1	G & O	65.36
54.32 (4W)	5	G & O	16.18
54.40 (4W)	1	G & O	70.52
54.50 (4W)	1	G & O	80.56
55.32 (A)	5	G & O	16.18
55.40 (A)	1	G & O	41.88
55.50 (A)	1	G & O	50.13



uPVC JOINTING SOLVENT

JOINTING – uPVC

CODE	DESCRIPTION	PRICE PER UNIT
SC125C	PVC Solvent Cement Clear 125ml POT	POA
SC250C	PVC Solvent Cement Clear 250ml POT	POA
MG125	PVC Solvent Cement Gold 125ml POT	POA
MG250	PVC Solvent Cement Gold 250ml POT	POA
MG500	PVC Solvent Cement Gold 500ml POT	POA
MG4000	PVC Solvent Cement Gold 4litre TIN	POA
CF500	PVC Joint Primer 500ml POT	POA
CF4000	PVC Joint Primer 4litre TIN	POA
JL250	PVC Joint Lube Medlube 275ml TUBE	POA
JL500	PVC Joint Lube Medlube 500g POT	POA
JL2000	PVC Joint Lube Medlube 2kg POT	POA



FLEXIBLE CONDUIT

FLEXIBLE CONDUIT

EASI

uPVC FLEXIBLE CONDUIT			
CODE	PACK	COLOUR	REC. TRADE PRICE PER COIL
30.20G	1 Coil 25m	G	151.80
30.25G	1 Coil 25m	G	180.73
30.32G	1 Coil 25m	G	275.64
30.40G	1 Coil 25m	G	591.09
30.50G	1 Coil 25m	G	899.94



SUPA

POLYPROPYLENE FLEXIBLE CONDUIT			
CODE	PACK	COLOUR	REC. TRADE PRICE PER COIL
30.20PPG	1 Coil 25m	G	132.58
30.25PPG	1 Coil 25m	G	167.61



Note: Flexi-Conduit Polypropylene CAN NOT be joined with PVC Solvent. Use conduit gland, plain to screw adaptor or specialised silicon.

SOLA

uPVC FLEXIBLE CONDUIT HEAVY DUTY SOLAR			
CODE	PACK	COLOUR	REC. TRADE PRICE PER COIL
30.20GHDSOLAR50	1 Coil 50m	G	429.55
30.25GHDSOLAR50	1 Coil 50m	G	641.29
30.32GHDSOLAR25	1 Coil 25m	G	521.16



FLEXIBLE CONDUIT FITTINGS

CONDUIT GLANDS			
CODE	PACK	COLOUR	REC. TRADE PRICE PER UNIT
27.20G	20	G	8.76
27.25G	20	G	10.85
27.32G	10	G	20.93
27.40G	5	G	55.42
27.50G	5	G	72.29



TRUNKING SYSTEMS

PAGE

11 TRUNKING SYSTEMS

12 MINI TRUNKING

12 Mini Trunking Fittings

14 MAXI TRUNKING

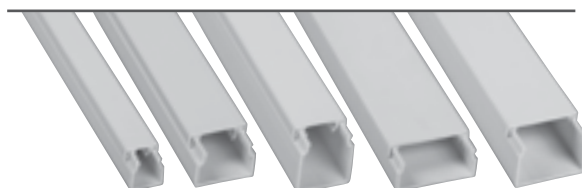
14 Maxi Trunking Fittings



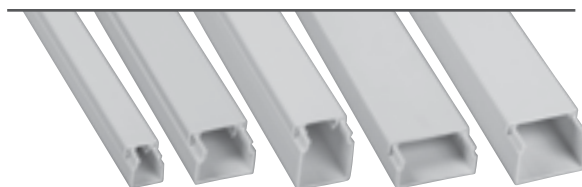
MINI TRUNKING

MINI TRUNKING

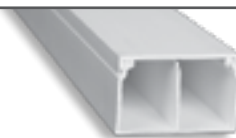
MINI TRUNKING – 3m			
CODE	PACK	COLOUR	REC. TRADE PRICE PER UNIT
1610.W3	60m (20 x 3m)	White	15.46
1616.W3	60m (20 x 3m)	White	16.42
2516.W3	60m (20 x 3m)	White	23.74
2516.B3	60m (20 x 3m)	Brown	25.91
2525.W3	30m (10 x 3m)	White	28.78
4016.W3	30m (10 x 3m)	White	31.95
4025.W3	30m (10 x 3m)	White	34.06
4040.W3	30m (10 x 3m)	White	51.92



MINI TRUNKING – 4m			
CODE	PACK	COLOUR	REC. TRADE PRICE PER UNIT
1610AD.W4	80m (20 x 4m)	White	19.47
1616AD.W4	80m (20 x 4m)	White	20.43
2516AD.W4	80m (20 x 4m)	White	30.09
2516AD.B4	80m (20 x 4m)	Brown	32.09
2525AD.W4	80m (10 x 4m)	White	36.68
4016AD.W4	40m (10 x 4m)	White	37.62
4025AD.W4	40m (10 x 4m)	White	44.72



TWIN COMPARTMENT MINI TRUNKING			
CODE	PACK	COLOUR	REC. TRADE PRICE PER UNIT
4025TC.W3	30m (10x3m)	White	43.41



MINI TRUNKING FITTINGS

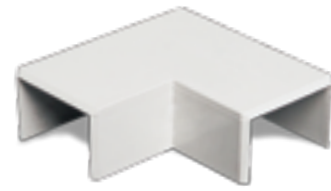
MINI TRUNKING INTERNAL ANGLE			
CODE	PACK	COLOUR	REC. TRADE PRICE PER UNIT
1616.AI.W	10	White	2.89
2516.AI.W	10	White	3.76
4025.AI.W	5	White	14.58



MINI TRUNKING EXTERNAL ANGLE			
CODE	PACK	COLOUR	REC. TRADE PRICE PER UNIT
1616.AE.W	10	White	3.12
2516.AE.W	10	White	3.76
4025.AE.W	5	White	14.75



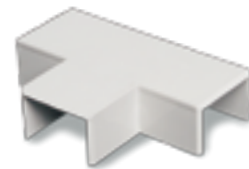
MINI TRUNKING FLAT ANGLE			
CODE	PACK	COLOUR	REC. TRADE PRICE PER UNIT
1616.AFW	10	White	2.89
2516.AFW	10	White	4.93
4025.AFW	5	White	14.89



MINI TRUNKING SIDE TEE			
CODE	PACK	COLOUR	REC. TRADE PRICE PER UNIT
2516.ST.W	10	White	7.64



MINI TRUNKING FLAT TEE			
CODE	PACK	COLOUR	REC. TRADE PRICE PER UNIT
1616.TFW	10	White	4.99
2516.TFW	10	White	5.31



MINI TRUNKING END PIECE			
CODE	PACK	COLOUR	REC. TRADE PRICE PER UNIT
1616.EP.W	20	White	2.19
2516.EP.W	20	White	2.54



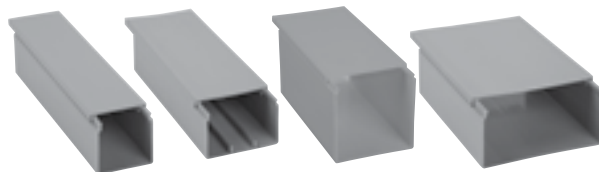
MINI TRUNKING COUPLING			
CODE	PACK	COLOUR	REC. TRADE PRICE PER UNIT
1616.C.W	20	White	2.54
2516.C.W	20	White	3.76
4025.C.W	10	White	5.24



MAXI TRUNKING

MAXI TRUNKING

MAXI TRUNKING – 4m			
CODE	PACK	COLOUR	REC.TRADE PRICE PER UNIT
5050AD.G4	32m (8 x 4m)	Dark Grey	105.94
7550AD.G4	24m (6 x 4m)	Dark Grey	134.17
7575AD.G4	24m (6 x 4m)	Dark Grey	167.71
100100AD.G4	16m (4 x 4m)	Dark Grey	262.17
15075AD.G4	8m (2 x 4m)	Dark Grey	280.64
10075.G	8m (2 x 4m)	Light Grey	229.84



MAXI TRUNKING FITTINGS

MAXI TRUNKING COUPLING				
CODE	SIZE	PACK	COLOUR	REC.TRADE PRICE PER UNIT
10075.C.G	100 x 75	1	Grey	40.90

Note: R10075.C.G coupling can also be used for 100100.AD.G4 Maxi-trunking.



MAXI TRUNKING END PIECE				
CODE	SIZE	PACK	COLOUR	REC.TRADE PRICE PER UNIT
R5050.EPG	50 x 50	1	Grey	9.06
R7550.EPG	75 x 50	1	Grey	9.23
10075.EPG	100 x 75	1	Grey	17.81
100100.EPG	100 x 100	1	Grey	10.02

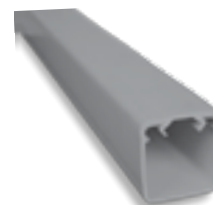


EGA TUBE TRUNKING

EGA TUBE TRUNKING – 3m			
CODE	PACK	COLOUR	REC.TRADE PRICE PER UNIT
R5050.GP	18m (6 x 3m)	Grey	80.00
R7550.GP	18m (6 x 3m)	Grey	96.97

Note: EGA Tube Trunking is a rounded edge profile compared to Maxi-Trunking.

Maxi trunking end pieces (R5050.EPG & R7550.EPG) can be retro fitted to be used on EGA tube. This requires mitre-cutting (2 x internal pieces) and rounding off edges to produce an adequate fit.



AIR-CON DUCT SYSTEMS

PAGE

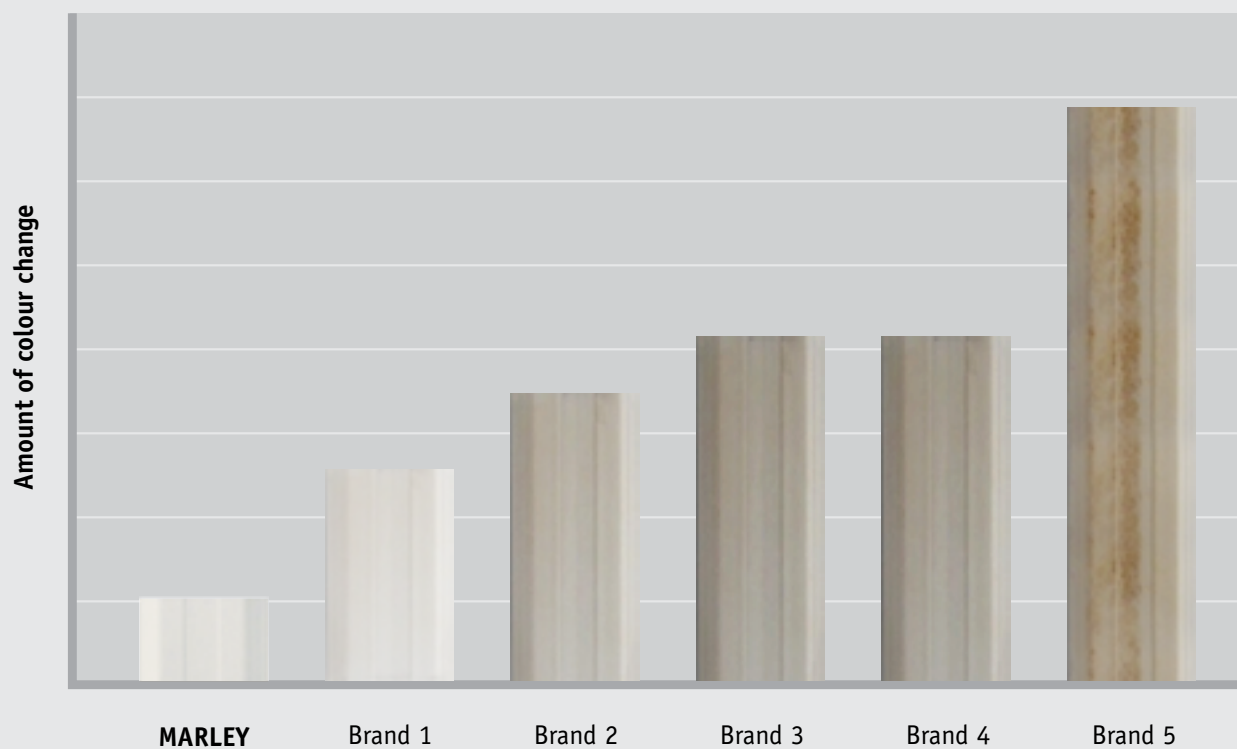
15 AIR-CON DUCT SYSTEM

16 AIR CONDITIONING DUCT AND FITTINGS

INDEPENDENT WEATHERING TEST RESULTS

In an independent weathering test, various brands of Air-Con duct were exposed to 1,000 hours of UV light and condensation testing.

Marley Air-Con duct had the least amount of colour change; indicating the **highest resistance to weathering in our conditions.**



*Source: 'UV/ Condensation testing of PVC ducting materials' – Felix Research Laboratories, May 2011. Report # 1008079.11

AIR CONDITIONING DUCT AND FITTINGS

AC DUCT AND FLEXI DUCT

AC DUCT CODE	SIZE	PACK	CARTON	COLOUR	REC.TRADE PRICE PER UNIT
PD80IV2000	80mm	1	10	Ivory	45.20



AC DUCT WALL CAP CODE	SIZE	PACK	COLOUR	REC.TRADE PRICE PER UNIT
PD80WC	80mm	1	Ivory	15.62



AC DUCT CEILING CAP CODE	SIZE	PACK	COLOUR	REC.TRADE PRICE PER UNIT
PD80CC	80mm	1	Ivory	18.91



AC DUCT CORNER CODE	SIZE	PACK	COLOUR	REC.TRADE PRICE PER UNIT
PD80C	80mm	1	Ivory	16.19



AC DUCT ELBOW CODE	SIZE	PACK	COLOUR	REC.TRADE PRICE PER UNIT
PD80E	80mm	1	Ivory	15.91



AC DUCT JOINT				
CODE	SIZE	PACK	COLOUR	REC.TRADE PRICE PER UNIT
PD80J	80mm	1	Ivory	5.31



AC DUCT FLEX JOINT				
CODE	SIZE	PACK	COLOUR	REC.TRADE PRICE PER UNIT
PD80FJ	80mm	1	Ivory	14.10



CODE	PACK	COLOUR	REC.TRADE PRICE PER UNIT
PDMBIV.450	1	Ivory	19.61



Note: Mounting block can be used with other AC duct systems.

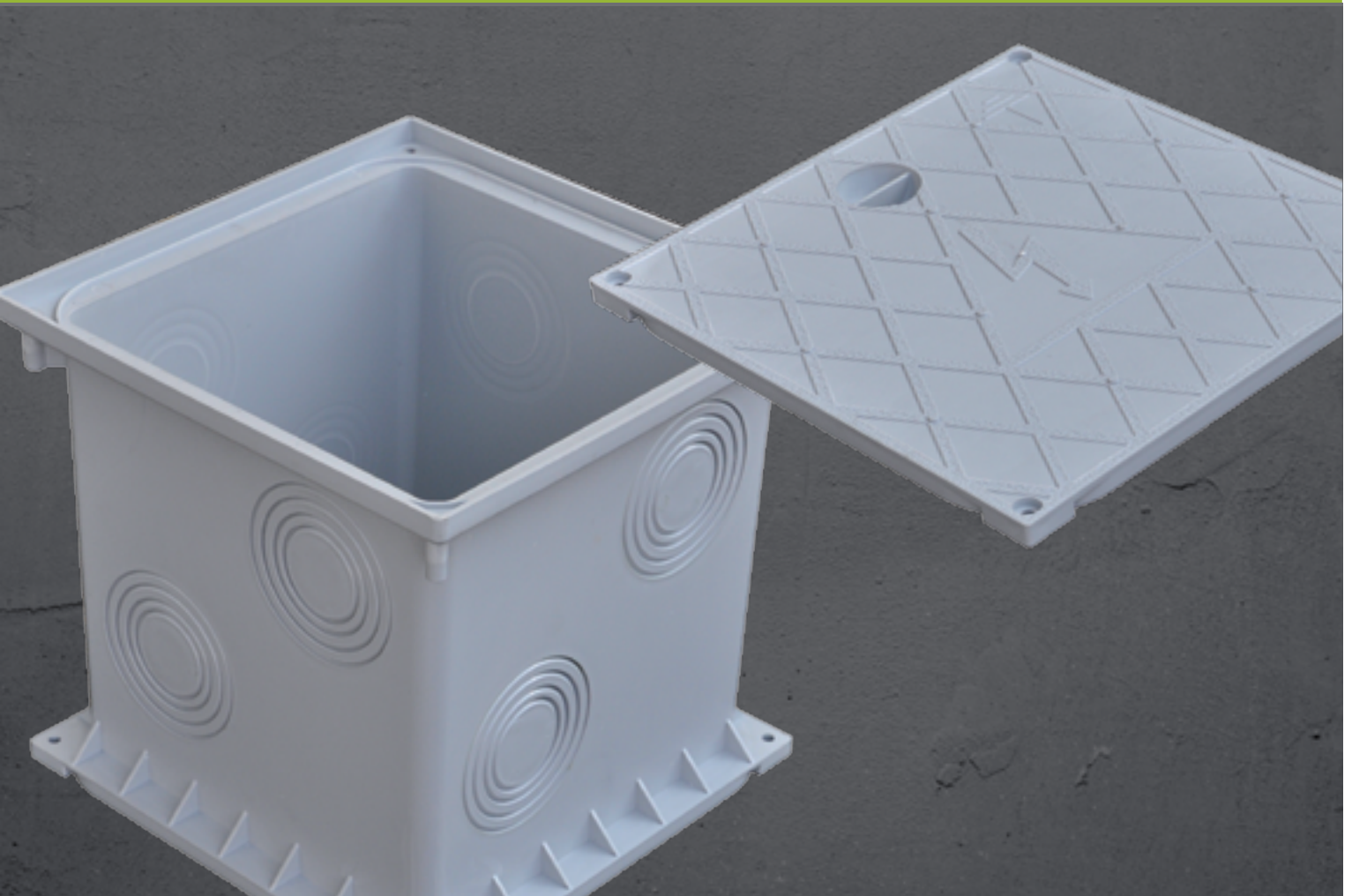


ACCESS PITS

PAGE

18 ACCESS PITS

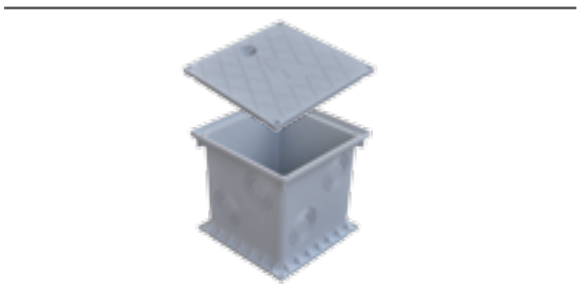
18 Electrical Access Pits



ELECTRICAL ACCESS PITS

ELECTRICAL ACCESS PIT (IP67, 1.5T lid) CODE	SIZE W X D X H (mm)	PACK	REC. TRADE PRICE PER UNIT
1SD4469	250 x 250 x 240	1	137.95

Note: Sold with lid, screws & rubber seal to give IP67 water and dust protection when installed correctly to manufacturers specifications.
Should you require one, Marley also offer a range of stormwater access pits and lids – please visit www.marley.co.nz



DUCT SYSTEMS

PAGE

19 DUCT SYSTEMS

20 RIGID DUCT

20 Power Duct

22 Communication Duct

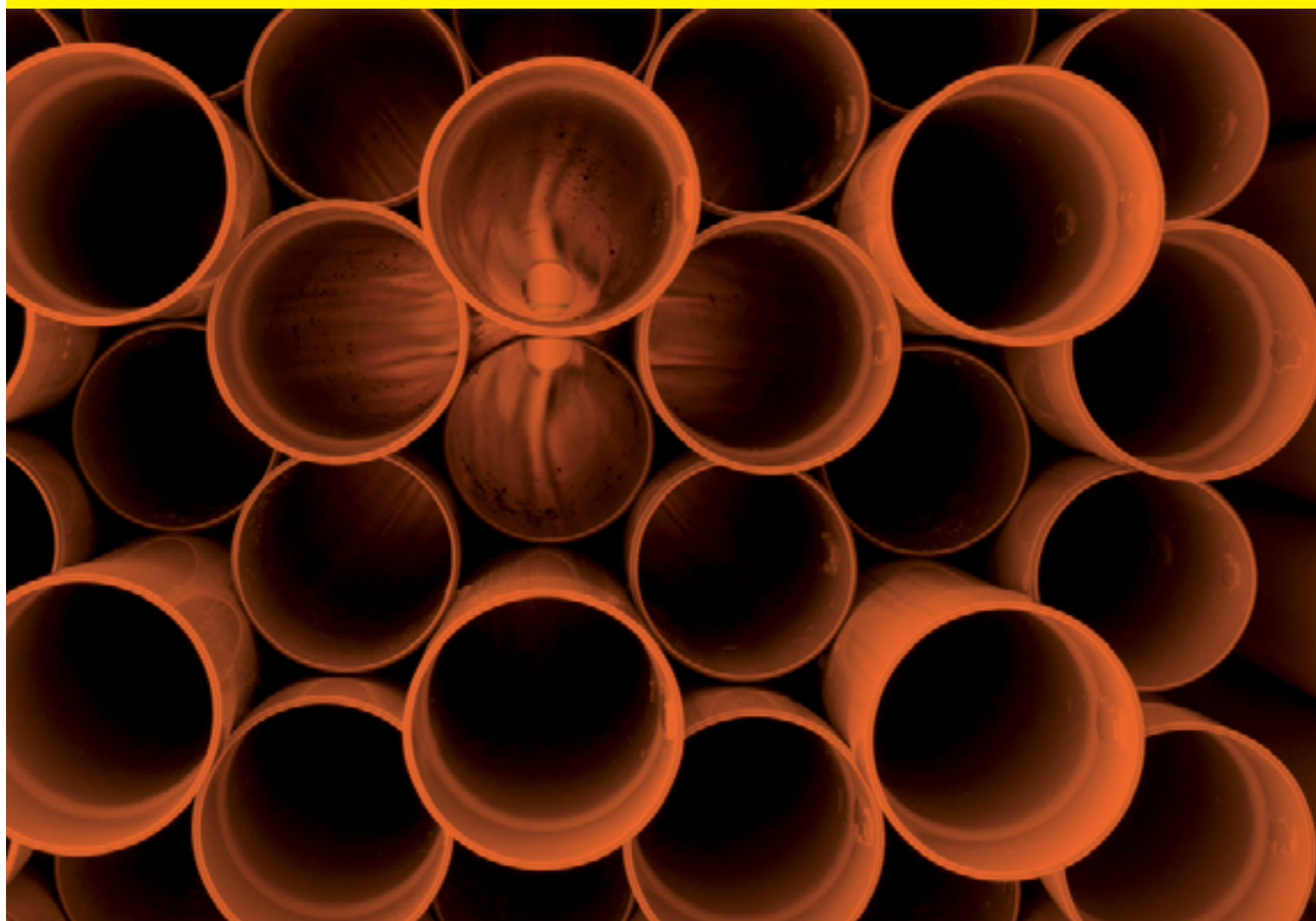
24 uPVC Jointing Solvent

25 CONTINUOUS DUCT

25 Power Duct

25 Communication Duct

27 Marley Electrofusion Fittings



RIGID DUCT

Marley NZ offers a wide range of uPVC Duct solutions for cable management – power, communication and fibre optic. Some lines are not held in stock and are made to order. Marley can manufacture product to customer specifications.

Please contact Marley Sales for minimum order quantities (MOQ's) and lead times for non-stock lines.

POWER DUCT

ELECTRICAL CABLE DUCT – STANDARD (uPVC)				
CODE	SIZE OD (mm)	COLOUR	LENGTH*	REC.TRADE PRICE PER UNIT
700.32.6.0	32	Orange	6m	49.46
700.40.6.0	40	Orange	6m	67.92
700.50.6.0	50	Orange	6m	97.63
700.65.6.0	65	Orange	6m	119.44
700.80.6.0	80	Orange	6m	161.45
700.100.6.0	100	Orange	6m	221.13
700.150.6.0	150	Orange	6m	533.58

ELECTRICAL CABLE DUCT – OTHER (uPVC)				
CODE	SIZE OD (mm)	LENGTH*	PACK	REC.TRADE PRICE PER UNIT
700.100.6.COR	100mm ID SN4 Contract Duct Orange	6m	1	POA
700.100SN16.6.OR	100mm ID SN16 Duct Orange	6m	1	POA
700.100SN40.6.OR	100mm ID SN40 Duct Orange	6m	1	POA
700.100SN6.6.ORTA	100mm ID SN6 Duct Orange – NZTA	6m	1	POA
700.150SN16.6.OR	150mm ID SN16 Duct Orange	6m	1	POA
700.150SN40.6.OR	150mm ID SN40 Duct Orange	6m	1	POA
TC110.RR.J.OR	110mm ID SN9 Duct Orange – KIWI RAIL	6m	1	POA

Note: Other sizes also available. MOQs and lead times may apply.

POWER DUCT BENDS

90° SWEEP BENDS					
CODE	SIZE mm	RADIUS mm	PACK	COLOUR	REC.TRADE PRICE PER UNIT
703.32.90.0	32	90	1	Orange	18.69
703.40.90.0	40	110	1	Orange	19.35
703.50.90.0	50	140	1	Orange	20.14
703.65.90.0	65	175	1	Orange	49.04
703.80.90.0	80	210	1	Orange	66.97
703.100.90.0	100	275	1	Orange	93.20
703.150.90.0	150	400	1	Orange	287.77

Note: See technical pages for bend specifications (radius, length, socket).

*Lengths indicated above include socket length



45° SWEEP BENDS					
CODE	SIZE mm	RADIUS mm	PACK	COLOUR	REC. TRADE PRICE PER UNIT
703.40.45.0	40	110	1	Orange	18.28
703.50.45.0	50	140	1	Orange	19.06
703.65.45.0	65	175	1	Orange	46.71
703.80.45.0	80	210	1	Orange	60.86
703.100.45.0	100	275	1	Orange	74.87
703.150.45.0	150	400	1	Orange	243.60



Note: See below for 11° and 22° sweep bends and other long radius bends available from Marley (lead times apply for non-stock items).

11° SWEEP BENDS					
CODE	SIZE mm	RADIUS mm	PACK	COLOUR	REC. TRADE PRICE PER UNIT
703.100.11.0	100	275	1	Orange	POA
703.150.11.0	150	450	1	Orange	POA



22° SWEEP BENDS					
CODE	SIZE mm	RADIUS mm	PACK	COLOUR	REC. TRADE PRICE PER UNIT
703.50.22.0	50	140	1	Orange	POA
703.65.22.0	65	175	1	Orange	POA
703.80.22.0	80	210	1	Orange	POA
703.100.22.0	100	275	1	Orange	POA
703.150.22.0	150	450	1	Orange	POA



90° SWEEP BENDS LONG RADIUS					
CODE	SIZE mm	RADIUS mm	PACK	COLOUR	REC. TRADE PRICE PER UNIT
703.50.90.R900	50	900	1	Orange	POA
703.50.90.R1200	50	1200	1	Orange	POA
703.50.90.R1500	50	1500	1	Orange	POA
703.65.90.R900	65	900	1	Orange	POA
703.65.90.R1200	65	1200	1	Orange	POA
703.65.90.R1500	65	1500	1	Orange	POA
703.80.90.R900	80	900	1	Orange	POA
703.80.90.R1200	80	1200	1	Orange	POA
703.80.90.R1500	80	1500	1	Orange	POA
703.100.90.R900	100	900	1	Orange	POA
703.100.90.R1200	100	1200	1	Orange	POA
703.100.90.R1500	100	1500	1	Orange	POA
703.150.90.R900	150	900	1	Orange	POA
703.150.90.R1200	150	1200	1	Orange	POA
703.150.90.R1500	150	1500	1	Orange	POA



45° SWEEP BENDS LONG RADIUS					
CODE	SIZE mm	RADIUS mm	PACK	COLOUR	REC. TRADE PRICE PER UNIT
703.50.45.R900	50	900	1	Orange	POA
703.50.45.R1200	50	1200	1	Orange	POA
703.50.45.R1500	50	1500	1	Orange	POA
703.65.45.R900	65	900	1	Orange	POA
703.65.45.R1200	65	1200	1	Orange	POA
703.65.45.R1500	65	1500	1	Orange	POA
703.80.45.R900	80	900	1	Orange	POA
703.80.45.R1200	80	1200	1	Orange	POA
703.80.45.R1500	80	1500	1	Orange	POA
703.100.45.R900	100	900	1	Orange	POA
703.100.45.R1200	100	1200	1	Orange	POA
703.100.45.R1500	100	1500	1	Orange	POA
703.150.45.R900	150	900	1	Orange	POA
703.150.45.R1200	150	1200	1	Orange	POA
703.150.45.R1500	150	1500	1	Orange	POA
703.175.45.R900	175	900	1	Orange	POA



COMMUNICATION DUCT

Marley NZ manufactures a range of communication duct, some of which is designed specifically to meet Chorus NZ Ltd specifications. Chorus have stated that Chorus branded product may only be sold to a “Chorus approved installer or their approved subcontractor” for use in Chorus NZ projects.

“Unbranded” communications duct (noted on the below and following pages) is different and may only be used for non-Chorus NZ communications projects.

COMMUNICATION DUCT

COMMUNICATION DUCT – WHITE (uPVC)				
CODE	SIZE OD (mm)	LENGTH*	PACK	REC. TRADE PRICE PER UNIT
TC20E.WHITE	20mm ID Chorus Duct White 6SJ	6m	1	POA
TC20WHDUCT	20mm ID Comm Duct 6SJ – Unbranded	6m	1	POA
700.100.6.W	100mm ID Comm Duct 6SJ – Unbranded	6m	1	POA



COMMUNICATION DUCT FITTINGS

COMMUNICATION DUCT FITTINGS – WHITE (uPVC)				
CODE	SIZE mm		PACK	
TCB.20.90.300.WH	TC Bend 20 x 90' 300 Long 100 radius		1	POA
TCB.20.90.660.WH	TC Bend 20 x 90' 66 Long 300 radius		1	POA
TC.SCREW.50	Chorus Screws Tri-wing		50	POA
TCJ.B	Chorus Junction Box White		1	POA



*Lengths indicated above include socket length

COMMUNICATION DUCT

COMMUNICATION DUCT – GREEN (uPVC)				
CODE	SIZE (mm)	LENGTH*	PACK	REC.TRADE PRICE PER UNIT
TC20E	20mm ID Chorus Duct Green 6SJ	6m	10	POA
TC50.RRJ	50mm ID Chorus Duct Green 6RRJ	6m	1	POA
TC110.RRJ	110mm ID Chorus Duct Green 6RRJ	6m	1	POA
TC20RDUCT	20mm ID Comm Duct Green 6SJ – Unbranded	6m	10	POA
TC50GRDUCT	50mm ID Comm Duct Green 6RRJ – Unbranded	6m	1	POA
TC110GRDUCT	100mm ID Comm Duct Green 6RRJ – Unbranded	6m	1	POA

Note: Rubber ring joints require Marley lube for jointing.



COMMUNICATION DUCT BENDS

COMMUNICATION DUCT BENDS – GREEN (uPVC)				REC.TRADE PRICE PER UNIT
CODE	SIZE mm	PACK		
TCB.20.90.240	20mm x 90° x 100mm radius x 240mm long	1		POA
TCB.20.90.300	20mm x 90° x 100mm radius x 300mm long	1		POA
TCB.20.90.500	20mm x 90° x 240mm radius x 500mm long	1		POA
TCB.20.90.660	20mm x 90° x 300mm radius x 660mm long	1		POA
TCB.20.90.1000	20mm x 90° x 530mm radius x 1000mm long	1		POA
TCB.50.30.600	50mm x 30° x 350mm radius x 600mm long	1		POA
TCB.50.45.600	50mm x 45° x 240mm radius x 600mm long	1		POA
TCB.50.45.750	50mm x 45° x 350mm radius x 750mm long	1		POA
TCB.50.45.1200	50mm x 45° x 900mm radius x 1200mm long	1		POA
TCB.50.90.1000	50mm x 90° x 350mm radius x 1000mm long	1		POA
TCB.50.90.1800	50mm x 90° x 900mm radius x 1800mm long	1		POA
TCB.100.22.1000	100mm x 22° x 900mm radius x 1000mm long	1		POA
TCB.100.30.750	100mm x 30° x 300mm radius x 750mm long	1		POA
TCB.100.45.850	100mm x 45° x 300mm radius x 850mm long	1		POA
TCB.100.90.1200	100mm x 90° x 400mm radius x 1200mm long	1		POA
TCB.100.90.1500	100mm x 90° x 600mm radius x 1500mm long	1		POA
TCB.100.90.1800	100mm x 90° x 900mm radius x 1800mm long	1		POA

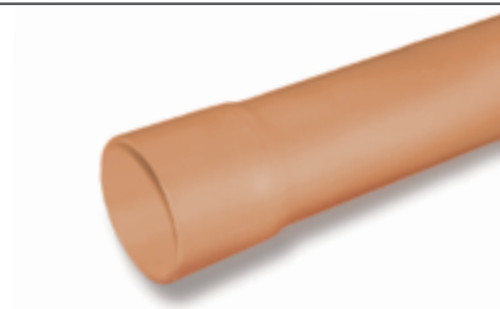


*Lengths indicated above include socket length

COMMUNICATION DUCT

COMMUNICATION DUCT – SALMON (uPVC)

CODE	SIZE (mm)	COLOUR	LENGTH*	PACK	REC.TRADE PRICE PER UNIT
700.100.6.CS	100mm ID SN4 Contract Duct	Salmon	6m	1	POA
700.100.6.NZTA	100mm ID Duct – NZTA	Salmon	6m	1	POA



COMMUNICATION DUCT

FIBRE OPTIC DUCT – RED (uPVC)

CODE	SIZE (mm)	LENGTH*	PACK	REC.TRADE PRICE PER UNIT
700.20.6.RD	20mm ID Fibre Optic Duct Red	6m	1	POA
700.32.6.RD	32mm ID Fibre Optic Duct Red	6m	1	POA
700.50.6.RD	50mm ID Fibre Optic Duct Red	6m	1	POA
700.65.6.RD	65mm ID Fibre Optic Duct Red	6m	1	POA
700.100.6.CRD	100mm ID Fibre Optic Duct Red	6m	1	POA



uPVC JOINTING SOLVENT

JOINTING (uPVC)

CODE	DESCRIPTION	PRICE PER UNIT
SC125C	PVC Solvent Cement Clear 125ml POT	POA
SC250C	PVC Solvent Cement Clear 250ml POT	POA
MG125	PVC Solvent Cement Gold 125ml POT	POA
MG250	PVC Solvent Cement Gold 250ml POT	POA
MG500	PVC Solvent Cement Gold 500ml POT	POA
MG4000	PVC Solvent Cement Gold 4litre TIN	POA
CF500	PVC Joint Primer 500ml POT	POA
CF4000	PVC Joint Primer 4litre TIN	POA
JL250	PVC Joint Lube Medlube 275ml TUBE	POA
JL500	PVC Joint Lube Medlube 500g POT	POA
JL2000	PVC Joint Lube Medlube 2kg POT	POA



*Lengths indicated above include socket length

CONTINUOUS DUCT

POWER SUBDUCT

POWER SUBDUCT – ORANGE (POLYETHYLENE)				
CODE	SIZE mm	COLOUR	LENGTH	REC.TRADE PRICE PER COIL
SUBD.32.200.0	32mm	Orange	200m	POA
SUBD.32.500.0	32mm	Orange	500m	POA
SUBD.32.1000.0	32mm	Orange	1000m	POA



POWER DUCT

POWER DUCT – ORANGE (POLYETHYLENE)				
CODE	SIZE mm	COLOUR	LENGTH	REC.TRADE PRICE PER COIL
COMD.40.200.0	40mm	Orange	200m	POA
COMD.50.100.0	50mm	Orange	100m	POA
COMD.63.50.0	63mm	Orange	50m	POA
COMD.63.100.0	63mm	Orange	100m	POA
COMD.63.150.0	63mm	Orange	150m	POA
COMD.90.100.0	90mm	Orange	100m	POA
COMD.110.50.0	110mm	Orange	50m	POA
COMD.110.100.0	110mm	Orange	100m	POA
COMD.125.100.0	125mm	Orange	100m	POA
COMD.140.100.0	140mm	Orange	100m	POA
COMD.160.12.0	160mm	Orange	12m	POA



COMMUNICATION SUBDUCT

COMMUNICATION SUBDUCT (POLYETHYLENE)				
CODE	SIZE mm		PACK	REC.TRADE PRICE PER COIL
SERVD.20.200.TG	Service Duct 20mm	200m Chorus Green	1	POA
SUBD.32.200.TG	Subduct 32mm	200m Chorus Green	1	POA
SUBD.32.500.TG	Subduct 32mm	500m Green	1	POA
SUBD.32.1000.TG	Subduct 32mm	1000m Chorus Green	1	POA
SUBD.20.200.UB.G	Service Duct 20mm	200m Green – Unbranded	1	POA
SUBD.25SD11.200.G	Subduct 25mm	500m Green SDR11 PE – Unbranded	1	POA
SUBD.25SD11.1000.G	Subduct 25mm	1000m Green SDR11 PE – Unbranded	1	POA
SUBD.32.1000.TG	Subduct 32mm	1000m Green – Unbranded	1	POA

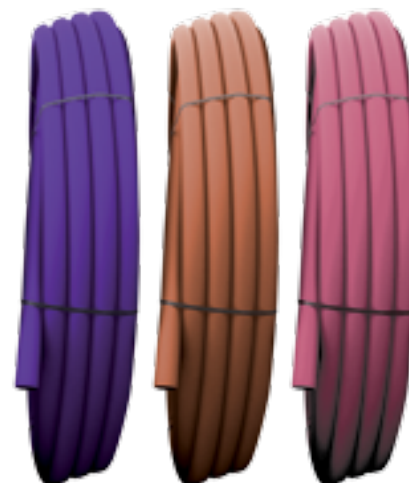


Note: See requirements for Chorus Duct on page 26.

COMMUNICATION SUBDUCT (POLYETHYLENE)

CODE	SIZE mm		PACK	REC.TRADE PRICE PER COIL
SUBD.20.500.TR	Subduct 32mm 500m Chorus Red SDR13.6 PE		1	POA
SUBD.32.1000.TR	Subduct 32mm 1000m Chorus Red SDR13.6 PE		1	POA
SUBD.32.500.TV	Subduct 32mm 500m Chorus Violet SDR13.6 PE		1	POA
SUBD.32.1000.TV	Subduct 32mm 1000m Chorus Violet SDR13.6 PE		1	POA
SUBD.32.500.TB	Subduct 32mm 500m Chorus Brown SDR13.6 PE		1	POA
SUBD.32.1000.TB	Subduct 32mm 1000m Chorus Brown SDR13.6 PE		1	POA
SUBD.25.200.RDU	Subduct 25mm 200m Red SDR11 PE		1	POA
SUBD.32.200.RDU	Subduct 32mm 200m Red SDR13.6 PE		1	POA
SUBD.32.1000.RDU	Subduct 32mm 1000m Red SDR13.6 PE		1	POA
SUBD.32.1000.S	Subduct 32mm 1000m Salmon SDR13.6 PE		1	POA

Note: See requirements for Chorus Duct on page 26.



COMMUNICATION DUCT

COMMUNICATION DUCT (POLYETHYLENE)

CODE	SIZE mm		PACK	REC.TRADE PRICE PER COIL
COMD.40.200.G	Commduct 40mm x 200m Chorus Green SDR17 PE		1	POA
COMD.50.100.G	Commduct 50mm x 100m Chorus Green SDR17 PE		1	POA
COMD.63.50.G	Commduct 63mm x 50m Chorus Green SDR17 PE		1	POA
COMD.63.100.G	Commduct 63mm x 100m Chorus Green SDR17 PE		1	POA
COMD.63.150.G	Commduct 63mm x 150m Chorus Green SDR17 PE		1	POA
COMD.110.50.G	Commduct 110mm x 50m Chorus Green SDR17 PE		1	POA
COMD.110.100.G	Commduct 110mm x 100m Chorus Green SDR17 PE		1	POA
COMD.63.100.RD	Commduct 63mm x 100m Red SDR17 PE – Unbranded		1	POA
COMD.110.100.RD	Commduct 110mm x 100m Red SDR17 PE – Unbranded		1	POA
COMD.63.100.S	Commduct 63mm x 100m Salmon SDR13.6 PE – Unbranded		1	POA
COMD.110.100.S	Commduct 110mm x 100m Salmon SDR17 PE – Unbranded		1	POA

Note: See requirements for Chorus Duct on page 26.



Note: Additional sizes / colours / specifications available on request. Minimum order quantities and manufacturing / delivery lead times apply.

MARLEY ELECTROFUSION FITTINGS

JOINTING – PE CODE	DESCRIPTION	PRICE PER UNIT
T612662	Electrofusion Coupler 32mm SDR11 PN16	POA
T612665	Electrofusion Coupler 63mm SDR11 PN16	POA
T612667	Electrofusion Coupler 90mm SDR11 PN16	POA
T680001	Electrofusion Coupler 110mm SDR17 PN10	POA
T612668	Electrofusion Coupler 110mm SDR11 PN16	POA
T612669	Electrofusion Coupler 125mm SDR11 PN16	POA
T615001	Electrofusion Coupler Slide Coupler 140mm SDR 11–17 PN16 Max	POA



Note: See Marley product catalogue for full range of electrofusion fittings (32–160mm, slide over couplers, end caps, repair sleeves).



Marley also sells a full range of compression and electrofusion fittings designed for use with polyethylene.
– please visit www.marley.co.nz

PRICES:

This price list cancels all previous price lists. All prices are subject to alteration without notice. Possession of this price list, a company catalogue or other leaflet is not to be considered as an offer to sell any product to the holder or at the prices stated. Prices quoted within this price list are subject to the addition of goods and services tax (GST).

AVAILABILITY:

All orders and promises of delivery are given in good faith and on the condition of labour, material, and transport being available and without responsibility for delays arising through risks and uncertainties of manufacture, strikes, accidents or other causes beyond our control.



AS/NZS 2053
License No 2297

All Marley manufactured conduit products comply with New Zealand Standards.



DISCLAIMER

This price book has been compiled by Marley New Zealand Limited ("The Company") and is supplied subject to acknowledgment of the following conditions:

The price book is protected by Copyright and may not be copied or reproduced in any form or by any means in whole or in part without prior consent in writing by the Company. Prices are subject to change, product specifications, usage data and advisory information may also change from time to time with advances in research and field experience. Industry standards are also subject to change, at the time of printing all products featured in this publication adhere to the relevant New Zealand standards where applicable. The Company reserves the right to make such changes to price or product information at any time without notice. Correct usage of the Company's products involve engineering judgements which cannot be properly made without full knowledge of all the conditions pertaining to each specific installation. The Company expressly disclaims all and any liability to any person whether supplied with this publication or not in respect of anything and of the consequences of anything done or omitted to be done by any such person in reliance whether whole or partial upon the whole or any part of the contents of this publication. No offer to trade, nor any conditions of trading, are expressed or implied by the issue or content of this manual. Nothing herein shall override the Company's Conditions of Sale, which may be obtained from the Registered Office or any Sales Office of the Company. This price book is and shall remain the property of the Company, and shall be surrendered on demand to the Company.

AUCKLAND – Mahia Road, Manurewa,
Private Bag 802, Manurewa.
Sales Department Tel: 09 279 2777

Direct Fax: 09 279 2778
Freefax: 0800 652 621
Head Office Tel: 09 279 2799
Fax: 09 279 2798
FREEPHONE: 0800 627 539

CHRISTCHURCH
Shands Road, Hornby,
PO Box 16233 Christchurch.
FREEPHONE: 0800 627 539

For more information: **FREEPHONE 0800 MARLEY (0800 627 539)**

www.marley.co.nz

an *Aliaxis* company

